



Betty A. Parish

April 12, 1925 - January 16, 2016

Betty A. (Jackson) King- Parish, 90, of Anderson, passed away January 16, 2016 at the Indiana Heart Hospital Indianapolis, IN. She was born April 12, 1925 in Alexandria , and resided most of her life in Anderson.

She was a homemaker.

She was a member of Landmark Baptist Church, Anderson, IN .

Betty is survived by her husband, Richard Parish, of Anderson, IN, daughter, Gloria (John) Closser, son Tim (Mary Beth) King of Anderson, IN, step - children, Connie (Bob) Hoffman, of Elwood, and Jim (Tina) Parish of Elwood, grandchildren, Laurel Atkinson, Jaima Borders, and Bethany (Mike) Peavler, great-grandchildren, Aleasha Atkinson, Karlee, and James Timothy Borders, and Tristan, Blake, and Grace Peavler. She is also survived by several step-grandchildren and step-great-grandchildren.

She was preceded in death by her parents, first husband, Virgil E. King, several, brothers and sisters, and her grandson, Michael Gaul Jr.

Visitation will be held from 4pm to 7pm on Thursday, January, 21, 2016 at Robert D. Loose Funeral Homes & Crematory, Anderson, IN.

Services will be held at 10am on Friday, January 22 , 2016 at the funeral home, with Pastor Gary Woodring officiating.

Burial will take place in the Anderson Memorial Park Cemetery, Anderson, IN .

Memorial contributions may be made to Landmark Baptist Church.

www.loosecares.com.

Cemetery Details

Memorial Park Cemetery

6805 Dr. Martin Luther King Blvd.
Anderson, IN 46013

Previous Events

Visitation

JAN 21. 4:00 PM - 7:00 PM (ET)

Loose Funeral Homes & Crematory
200 W 53rd St
Anderson, IN 46013
(765) 649-5255
info@loosecares.com

Service

JAN 22. 10:00 AM (ET)

Loose Funeral Homes & Crematory
200 W 53rd St
Anderson, IN 46013
(765) 649-5255
info@loosecares.com

Tribute Wall



“ *Loose Funeral Home created a Tribute Video in memory of Betty A. Parish*



Loose Funeral Home - January 20, 2016 at 01:44 PM



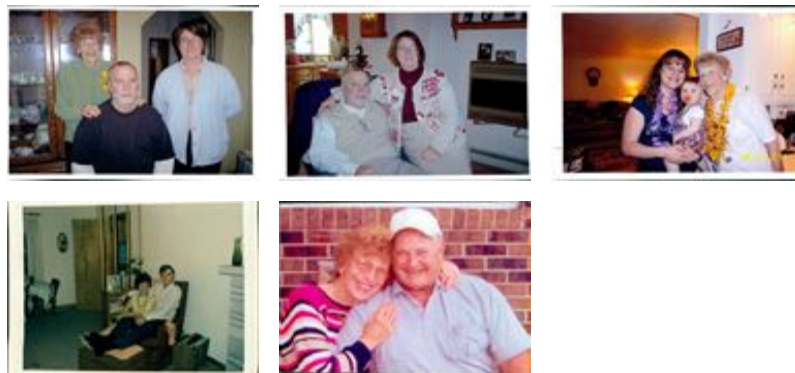
“ *George Long and Audrey Webber purchased the Simply Elegant Spathiphyllum for the family of Betty A. Parish.*



George Long and Audrey Webber - January 20, 2016 at 05:05 PM



“ *30 files added to the album Life Tributes*



Loose Funeral Home - January 20, 2016 at 01:35 PM



“ *Small Garden Dish was purchased for the family of Betty A. Parish.*



January 19, 2016 at 03:43 PM